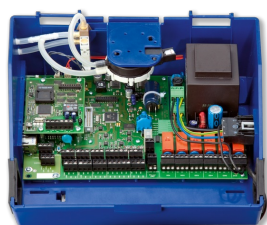
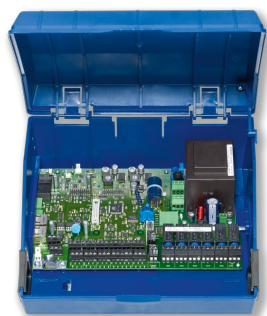


EXPANSION MODULE EM-
TRF



EASYPAB CONTROLLER
TCU3



EASYPAB ADAPTER
MODULE TAM

EM-TRF

FOR THE CONNECTION OF EASYPAB TO THE 230 V MAINS

Expansion module for the direct connection of EASYPAB controllers
Type TCU3 and adapter modules Type TAM to the 230 V mains

- Double-stack terminal blocks for 230 V supply voltage connection
- Electric plug connection to the main PCB
- The expansion module is fitted into the casing with the EASYPAB base component

Application

Application

- Expansion module Type EM-TRF for the EASYPAB system
- For the connection of EASYPAB base components (controller TCU3 or adapter module TAM) to the 230 V AC supply voltage (mains)
- Power supply for the base component and the connected modules

- Factory mounted or for retrofitting into the EASYLAB base component casing

Special characteristics

- Ready for installation, can be easily connected to the main PCB
- Double-stack terminal blocks for 230 V AC supply voltage connection
- Simple electrical connection of expansion module and EASYLAB main PCB using a connection plug
- Simple wiring of switch-operated fume cupboard lighting in combination with the EM-LIGHT expansion module

Description



Parts and characteristics

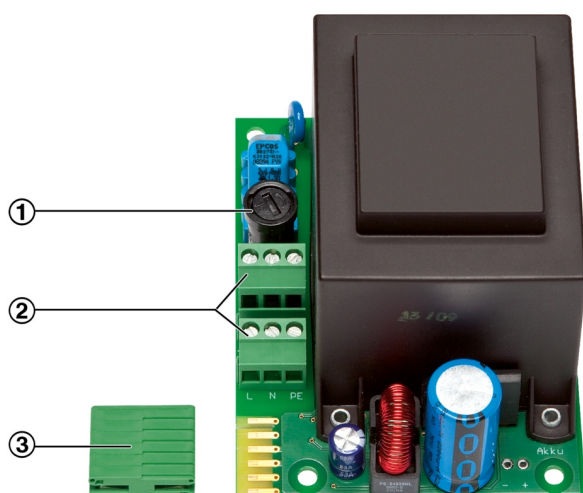
- Mains transformer 230 V AC (primary), 24 V AC (secondary)
- PCB plug connector to connect the module to the EASYLAB main PCB

Construction features

- PCB dimensions and fixing points correspond to the EASYLAB main PCB and the casing
- Fixing with screws
- Double-stack terminal blocks for simply 230 V supply voltage connection

INFORMAȚII TEHNICE

EM-TRF



- ① Primary fuse
- ② Connection terminals for supply voltage
- ③ PCB connector plugs for connection to the TCU3 controller board

Supply voltage	230 V AC \pm 10 %, 50/60 Hz
Power consumption	up to 40 VA for a controller with all expansion modules; up to 35 VA for a fume cupboard controller with control panel; up to 33 VA for a room controller with control panel; up to 29 VA for a room controller without control panel; up to 9 VA for an EASYLAB adapter module TAM
Primary fuse	50 mA slow blow, 250 V
Double-stack terminal blocks	Cable cross-section up to 2.5 mm ²
Operating temperature	0 – 50 °C
IEC protection class	I (protective earth)
Protection level	IP 20
EC conformity	EMC to 2004/108/EU, low voltage to 2006/95/EU
Weight	1.3 kg

Expansion module for the EASYLAB base component (controller TCU3 or adapter module TAM) that can be directly connected to a 230 V AC supply voltage. The expansion module includes a transformer whose secondary voltage (24 V) is equal to the supply voltage for the controller and the expansion modules connected to it.

Special characteristics

- Ready for installation, can be easily connected to the main PCB
- Double-stack terminal blocks for 230 V AC supply voltage connection
- Simple electrical connection of expansion module and EASYLAB main PCB using a connection plug
- Simple wiring of switch-operated fume cupboard lighting in combination with the EM-LIGHT expansion module

Technical data

- Supply voltage: 230 V AC \pm 10 %, 50/60 Hz
- Power consumption: up to 40 VA for a controller with all expansion modules; up to 35 VA for a fume cupboard controller with control panel; up to 33 VA for a room controller with control panel; up to 29 VA for a room controller without control panel; up to 9 VA for an EASYLAB adapter module TAM
- Double-stack terminal blocks: Cable cross-section up to 2.5 mm²
- Protection level: IP 20

Order code detail for control component
ELAB (TCU3) or TAM

ELAB / ... / T... / ...

Expansion module EM-TRF for retrofit

EM-TRF